

Our clients continued to rely on Providence House for basic needs and support during the COVID-19 pandemic.

*Learn more about how we have altered our services to meet the changing need inside!*

Because *Every Child* deserves  
***a healthy home***



Providence  
House

Every child is your child.™

— ProvidenceHouse —

# HOUSE NEWS

— Spring 2020 —

**FOUNDER:**

Sr. Hope Greener, CSJ

**PRESIDENT & CEO:**

Natalie A. Leek

**EXECUTIVE OFFICERS:**

Jane M. Cronin, Chair  
Duane F. Bishop, Jr.\*, Chair Emeritus  
Gregory D. Rush, Vice Chair  
Timothy K. Flanagan, Treasurer  
Paul T. Kostyack, Counsel  
J. Chaz Weber, Secretary

**DIRECTORS:**

Shelby Ball  
Warren Blazy  
Chris Conti  
Charlene Coughlin  
Rob DiGeronimo  
Karen R. Dolan  
John C. Evans  
Adam R. Jacobs  
Anna Kanaris  
Joseph P. Lukac  
Tony Madalone  
Ryan P. McKean  
Carol A. Moore  
Tori Nook  
Tom Reddy  
Jeffrey A. Robinson  
Eileen Schreiber-Radis  
Cristine Torek  
Gareth D. Vaughan\*  
Karla R. Wludyga

**LEGACY COUNCIL MEMBERS:**

William J. Aamoth  
Joseph Bauer  
Edward Bell\*  
William M. Denihan\*  
Terrance K. Donley  
Evelyn Croft Faulkner  
Sally Gries  
Thomas M. Laird  
Lolita McDavid, M.D.  
Paul M. O'Connor\*  
Rena Olshansky  
Jeffrey K. Orloff\*  
Susan M. Palmer  
Dominic V. Perry\*  
Robert J. Roe  
Russell Trusso, M.D.

**HONORARY**

**LIFETIME MEMBERS:**

Suzanne Christ  
William Christ  
Sr. Nancy Conway, CSJ  
John Doherty\*  
Robert Dorfmeier†  
Stanley Kerka  
Greg Klein\*  
Sandy Kish Jordan  
Bettie Perry†  
Charles E. Taylor, PhD\*

\* Past President † Deceased

# A Note from Natalie



All of us have been impacted by the devastating COVID-19 pandemic in many ways, big and small. Please know that as a member of our Providence House PHamily your safety and health are in my thoughts and prayers each day.

Providence House and our families have also been impacted dramatically. Many of you have received my emails or videos and read our social media posts sharing the heartbreaking news about the temporary closure of our Children's Crisis Nursery Shelter services for the safety of our children and our staff who love and care for them.

Rest assured, we have not stopped services and we continue to care for the children and their families who need us. But, we've had to change the way that we deliver that care and service.

We are currently supporting 127 families through phone-based case management, counseling and referral services. We are also continuing to keep them safe, healthy, clothed, and fed by delivering basic need items such as food, diapers, formula, bedding and cleaning supplies directly to their apartments or houses so that they can follow stay at home orders with little or no income.

Providence House is hand delivering an average of 25 care packages of critically needed supplies to families each week valued at over \$500. But our donated supplies are limited, demand is growing, and our staff are working around the clock.

We desperately need your help to help families in crisis survive this new crisis.

Beyond changing the way we need to offer services and supplies, the pandemic is changing the way we are engaging our supporters. April is a big month for Providence House. It is Child Abuse Prevention Month and our 39th Anniversary as an organization dedicated to keeping kids safe and families together.

We had multiple events scheduled for April which have had to be cancelled or postponed, including our Annual Luncheon on April 30th where we planned to share updates and celebrate with over 700 PHriends who support our children. This is an essential fundraising event to support our services for children and their families but simply cannot be hosted as we have for the safety of our supporters.

But we are resilient! You can still help! Just like we've had to pivot and modify our critical service delivery for families, we are transforming our Luncheon to a "virtual event" on April 30th. More information is in this newsletter and I will be sending video updates throughout the month.

Please know that we are still on the frontlines of this community crisis on a daily basis – and we will continue to do so – as the steward of your prayers, hearts and hands to help those in need through your gifts to us.

Please remember our children and families during this unprecedented community crisis. Use your newsletter envelope, go online at our website to make a gift or visit our wish lists for critical items that our families desperately need.

And please, please, please be safe and be well.

“We desperately need your help to help families in crisis survive this new crisis.”

## April is Child Abuse Prevention Month

Each April, we recognize Child Abuse Prevention Month. This year's theme is **Strong and Thriving Families**. At Providence House, we're dedicated to keeping kids safe and families together by protecting at-risk children, supporting families through crisis, and strengthening communities to end child abuse and neglect.



JOIN US FOR OUR  
**39th** ANNUAL  
VIRTUAL LUNCHEON FOR EVERY CHILD!

Thursday, April 30th 11:00 a.m.  
Online



Help us reach our goal by texting  
**PH2020** to **41444**

**At this year's luncheon, you'll have the opportunity to:**

- Hear updates from our President and CEO, Natalie Leek
- Win a themed raffle basket or purchase a prize bag for \$20
- Change lives by supporting families and children

To learn more, register, or donate online, please visit [provhouse.org/luncheon](https://provhouse.org/luncheon).

# Adapting to a New Crisis: COVID-19

In our first week of adapted services, we encountered a mom of three, living in a Habitat for Humanity home, needing help with basic needs items for her three young boys. The stores were out of baby wipes and she needed pull-ups and diapers as well. She turned to Providence House for help. We packed up the items and drove them to her, dropping them off at her home so she could continue practicing social distancing and keeping her three boys safe.

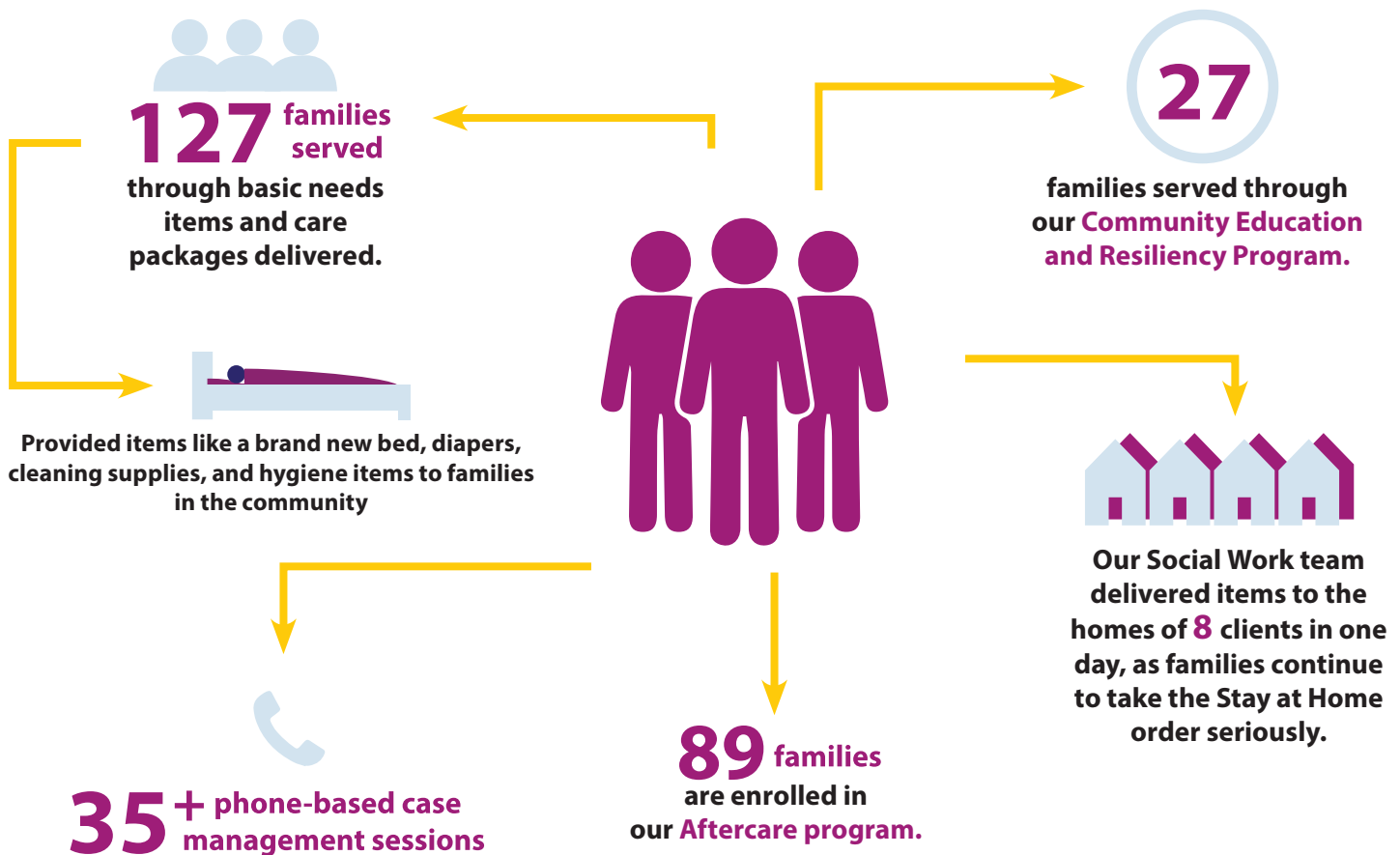
## Social workers have begun delivering items to the homes of clients.

Our families have taken the Stay at Home order seriously, seeking support with basic needs items so that they don't have to take their kids on public transportation and social distancing risks. They are very positive and thankful for support. Several families have even called or video-chatted with each other. While we may be struggling with the new normal, we can still be connected!

Here are some tips we gained from our clients:

*Let your kids still be kids! • Try cooking a new recipe you've been wanting to try  
Plan something fun for the future • Video Chat with your friends and family*

## Services Provided in Our First Week



**Shopping on Amazon?** Use Amazon Smile and choose Providence House as your preferred organization, and PH will get a portion of the sale. You can also check out our Amazon wish list, and have our highest needed items shipped directly to our door!

Visit [provhouse.org/wishlist](https://provhouse.org/wishlist) to send a donation today.

**amazon**smile  
You shop. Amazon gives.

# Thank You to our Volunteers!

From childcare volunteers, to special events, to sorting inventory and pulling weeds, our volunteers are the unsung heroes of Providence House.

They work tirelessly behind the scenes to make sure we can continue to serve more children and keep more families together.

April is National Volunteer Month and we want our volunteers to know how grateful we are for them.

**From the bottom of our hearts, thank you for all you do!**

**To learn more about volunteer opportunities,**  
Visit [provhouse.org/volunteer](http://provhouse.org/volunteer)



## Have you joined the Every Child Club?

Sign up for the most important subscription service available: a membership to the Every Child Club.

Your monthly donation will support a different child every month. In return, you'll receive exclusive family stories, member opportunities to support Providence House, and PH items.

**Want to learn more?**

Visit [provhouse.org/everychild](http://provhouse.org/everychild)

## Volunteer Spotlight

Meet Becca: A 9-year Childcare Volunteer!

### How did you get involved?

I'd never heard of Providence House until a group I was involved with made a holiday donation. When I saw what PH does, I knew I wanted to volunteer there.

### What's your favorite memory from volunteering?

I don't think I have just one! I love volunteering, and I have wonderful memories of so many of these truly amazing kids. They get woven into your inner fabric in a way I just can't explain. An unexpected bonus was all the great memories and friendships I have made with staff members. I really do feel like I'm a part of the PH family.

### What's one thing you want others to know about Providence House?

Providence House is filled with adults who genuinely care about the kids who walk through those doors. I can't imagine experiencing what so many of our families go through, or having to make the choice to have your children live with strangers. If I was ever in an emergency situation and in great need, PH is a place I would want to care for and protect my children.



## Giving Hope

FOR THE PHUTURE

Soon, we'll be opening up our Providence House East Campus, located in the Buckeye Shaker neighborhood. As the first organization to take part in revitalization efforts in the area, we'll be moving our administrative staff to this campus and expanding with a residential space to serve even more children and families each year.

"The message to the neighborhood is: you're worthy of investment. We care about you. We care about everyone in Cleveland."

—Natalie Leek, CEO and President.

**To learn more about our exciting expansion,** visit [provhouse.org/givinghope](http://provhouse.org/givinghope).





Non-Profit Org.  
U.S. Postage  
**PAID**  
Cleveland, OH  
Permit No. 1922

2050 West 32nd Street  
Cleveland, Ohio 44113

p. 216.651.5982 • provhouse.org

Follow us on Social Media  
@provhousecle



### Are our records correct?

If you're receiving extra copies of the newsletter or notice a misspelling or error with our database, please let us know!

Email all updates to Kaylee Quanbeck at kaylee@provhouse.org.

## Looking Ahead

Visit [provhouse.org/events](http://provhouse.org/events) for more information!

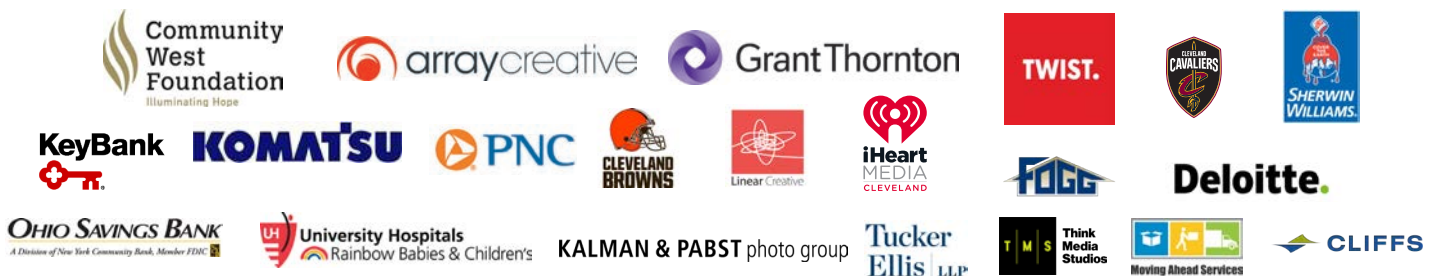
pARTy with PHriends  
*October 2*

78th Street Studios

Deck the House  
*December 8*

FirstEnergy Stadium

Thank you to our Corporate Partners:



Proud to be a partner of:

